



Compagnie Industriali Riunite

CIR is the industrial holding company, which is controlled for approximately 46% by COFIDE-Gruppo De Benedetti, the holding company of the De Benedetti family. The main sectors of activity are: Energy (Sorgenia), Media (Espresso), Automotive Components (Sogefi), Health Care (KOS), Financial Investments and New Initiatives.

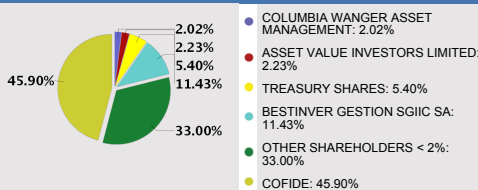
CORPORATE GOVERNANCE * (CG)

Executive Non executive Independent	BOARD MEMBERS	C.C.I.(1) C.R.(2) C.N.(3)	TOP MANAGEMENT

(1): Internal Control Committee (2): Compensation Committee (3): Nomination Committee

(CG) Corporate Governance: Traditional Model

SHAREHOLDERS *



Source: COMPANY. Update: 22/12/2011

Company Profile

COMPANY
C.I.R.
 Via Ciovassino n. 1
 20121 MILANO
 Tel.: 02 722701
 http://www.cirgroup.it



Investor relations *

Michele Caviglioli
 E-mail: info@cirgroup.it
 Tel.: +39 02 72270 605 - Fax: +39 02 72270 309



Long term rating *

S&P: BB

ISIN	IT0000080447
BLOOMBERG	CIR IM
REUTERS	CIR.MI
Industry	INDUSTRIALS
Super sector	INDUSTRIAL GOODS & SERVICES



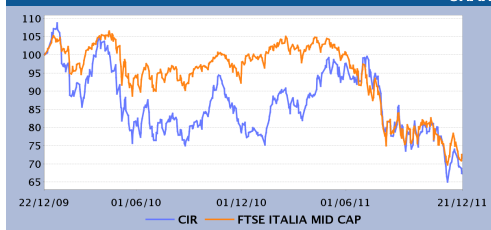
KEY FIGURES *

€m	9 Months		Var % '11 vs '10	Annual Results	
	30/09/11	30/09/10		31/12/10	31/12/09
Total Sales	3,300.90	3,263.80	1.14%	4,805.50	4,266.80
Ebitda	340.30	289.70	17.47%	400.10	294.60
Ebitda margin	10.31%	8.88%		8.33%	6.90%
Ebit	189.50	160.60	18.00%	215.80	148.00
Ebit Margin	5.74%	4.92%		4.49%	3.47%
Ebt	94.50	105.40	-10.34%	136.00	185.10
Ebt margin	2.86%	3.23%		2.83%	4.34%
Net Result	15.00	53.70	-72.07%	56.90	143.40
E-Margin	0.45%	1.64%		1.18%	3.36%

	9 Months		Var % '11 vs '10	Annual Results	
	30/09/11	30/09/10		31/12/10	31/12/09
Net Financial Debt / (Cash)	2,308.10	2,222.70	3.84%	2,166.80	1,801.10
Net Equity	2,518.90	2,457.40	2.50%	2,522.90	2,332.30
Capital Employed	4,827.00	4,680.10	3.14%	4,689.70	4,133.40

Source: company data. The year-end closing is at December, 31. Values are expressed in Million Euro. Figures are IAS compliant.

SHARE ANALYSIS

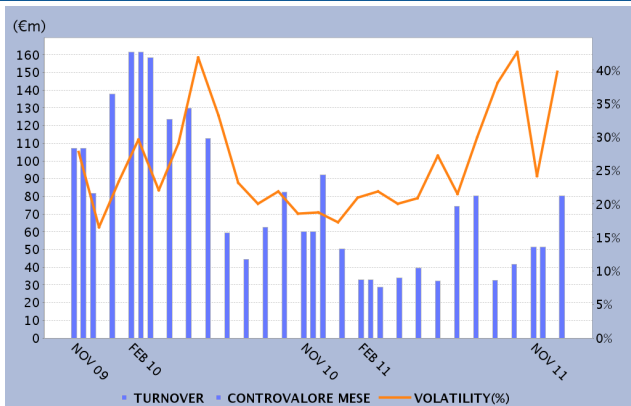


	Quantity	Capitalis. (€ m)
Number of shares outstanding	793,271,467	946.61
Ordinary	793,271,467	946.61
Nominal value (€)		0.50
Ordinary	Last Divid. (€)	Detach Date
	0.025	23/05/2011

Last price	Ord	Performance	Ord	INDEX ITMC	Relative perf.
21/12/2011	1.19	-2Y	-32.35%	-2Y	-4.08%
Price range (-2y)	Ord	-1Y	-15.78%	-1Y	12.36%
MAX	1.93	-3M	-15.21%	-3M	-5.30%
MIN	1.15	-1M	-4.76%	-1M	-3.39%

TURNOVER AND VOLATILITY - STATISTICS FROM 03/01/2011 TO 21/12/2011

Turn over	Total(€)	511,733,854
	Daily average(€)	2,046,935
Number of shares traded	Total	339,060,027
	Daily average	1,356,240
Number of trades	Total	171,569
	Daily average	686
Volatility		28.81%
Turnover velocity		43.77%



Source: Borsa Italiana. Data refer to the ordinary shares.

OTHER LISTED INSTRUMENTS ON BIT MARKET

IDEM STOCK FUTURES SECURITISED DERIVATIVES WARRANTS STOCK OPTIONS LISTED BONDS

ANALYST REPORTS

Analyst reports from www.borsaitaliana.it: Deutsche Bank (28/10/2011) Deutsche Bank (17/10/2011) Deutsche Bank (14/10/2011) Deutsche Bank (25/07/2011) Deutsche Bank (22/07/2011)

* The above information has been provided and updated by the issuing company